



Version 1, User's Guide

Computer Keyes, 21929 Makah Road, Woodway, WA 98020
Tel: (425)776-6443 Fax: (425)776-7210 US&Can: (800)356-0203 www.ckeyes.com

Limited Use License Agreement

The software described in this document is furnished free of charge. The software may be used or copied only in accordance with the terms of this agreement.

License

You may use the programs on any machine and copy the programs into any machine readable or printed form for backup purposes in support of your use of the programs on those machines.

You may not repackage, modify, sub-license, assign, or transfer the programs in whole or in part to another party.

You must not remove or alter any copyright notices on any of the programs.

You may not reverse engineer, decompile, or disassemble any of the programs, except when such activity is expressly permitted.

Term

This license may be terminated if you fail to comply with the terms and conditions of this license agreement. You agree upon such termination to destroy the programs together with all copies.

Warranty

The programs are provided as-is with no warranty: If you find that KeyesMonitor™ does not perform a function as it is described in the user's guide, Computer Keyes may attempt to correct the problem. Computer Keyes cannot guarantee that the software will continue to function properly on all current or future hardware and operating system combinations.

Computer Keyes does not warrant that the functions contained in the programs will meet your specific requirements or that the programs are fit for a particular purpose.

Limitation of Liability

Computer Keyes' entire liability and your exclusive remedy shall be the replacement of defective materials.

In no event will Computer Keyes be liable to you for any damages, including any lost profits, lost savings, or other incidental damages arising out of the use of or inability to use any of the programs.

© Copyright 2004, Computer Keyes. All rights reserved.

IBM is a registered trademark of International Business Machines Corporation.

KeyesMail, KeyesPDF, KeyesOverlay and KeyesMonitor are trademarks of Computer Keyes.

All other company and product names are trademarks or registered trademarks of their respective holders.

Table of Contents

KeyesMonitor **5**

| | |
|---|-----------|
| Introduction..... | 5 |
| Installation Instructions..... | 6 |
| Installing in a Folder on the IFS..... | 6 |
| Creating a new Folder called KMONITOR..... | 6 |
| Defining a NetServer File Share..... | 7 |
| Defining a Network Drive..... | 7 |
| Installing the Programs..... | 7 |
| Making a Shortcut to KeyesMonitor..... | 8 |
| Uninstalling KeyesMonitor..... | 8 |
| Using KeyesMonitor..... | 9 |
| Starting the KeyesMonitor Program..... | 9 |
| Starting & Stopping the Monitoring Process..... | 9 |
| Java Requirements..... | 9 |
| Windows Requirements..... | 9 |
| Configuring KeyesMonitor..... | 10 |
| Monitor Tab..... | 10 |
| Process Tab..... | 11 |
| Post Process Tab..... | 12 |

Index **13**

Table of Contents

- - - blank page - - -

KeyesMonitor

Introduction

KeyesMonitor is a multi-purpose tool that has been configured for and is being shipped as an automated PDF printing tool. It will function just like a spool writer for PDF documents. It can be easily configured to print other types of documents or it can be reconfigured to do many other things to files.

It will monitor a folder on any local or network drive. When files with a specific filename extension arrive in the monitored folder, **KeyesMonitor** will send each file to a processing program and then perform a post process to the same file.

As shipped, it is intended to automate the printing of PDF or TIF documents that are generated on your iSeries, in one of the IFS folders. **KeyesMail**, **KeyesFax**, and **KeyesPDF** are examples of programs that can automatically create PDF's or TIF's in an iSeries folder for automated printing.

Processing the file:

The processing of the file can be anything that the computer can do to it. We ship **KeyesMonitor** with the process program being a PDF or TIF print writer.

Post processing the file:

The post process of the file is used to prevent the same file from being processed more than once. You can change the extension of the file, move it to another folder, or delete the file. If the post process fails to be performed, the program will stop the monitoring process. This is a safety feature intended to prevent a runaway program.

Installation Instructions

You can install the **KeyesMonitor** programs anywhere that you wish. The first step in the installation process will begin with the download of the self-expanding file from our website into a folder of your choice. You will then expand the file in that folder.

You may install the programs on your iSeries in the IFS, on a network drive, or on your own C: drive. We recommend that you install the programs in your IFS and call the folder **KMONITOR**. If you have installed **KeyesOverlay**, you may wish to add **KMONITOR** to the **KOVERLAY** directory. The following instructions are intended to help you do just that.

Installing in a Folder on the IFS

To install the programs on your IFS, you will need to perform the steps, as outlined below:

- Use the Operations Navigator to create a new folder.
- Define a NetServer File Share for the folder.
- Define a Network Drive on your PC to access the folder.
- Install the Programs in the folder.
- Make a shortcut on your Desktop to start the program running.

Creating a new Folder called **KMONITOR**

The Operations Navigator program can be used to create a new folder in your IFS. You can place **KMONITOR** in the Root directory, the **HOME** directory or in the **KOVERLAY** directory, if you have one. If you already have defined any Network drives to access your IFS, you may find it most convenient to place **KMONITOR** in one of those folders.

Using Operations Navigator:

1. Start the **Operations Navigator** from your PC.
2. Under **My Connections** select your iSeries computer by double clicking.
3. Double click **File Systems**, then **Integrated File System**.
4. Open the **Root** directory by double clicking on it.
5. Right Click on the directory where you want to add the new folder and select **New Folder ...**
6. Type **KMonitor** for the new object name and press **OK**.

Defining a NetServer File Share

If you have placed **KMONITOR** in a folder that you already have access to, you can skip these steps. Otherwise, this will give you access to the programs from a PC. You will define a File Share for the **KMONITOR** folder using the **Operations Navigator**:

1. Using **Operations Navigator** right click on **KMONITOR** and select **Permissions**.
2. On the **Permissions** screen set the desired permissions for the user's that will need access to the programs, and press **OK**.
3. Right click on **KMONITOR** and select **Sharing / New Share...**
4. On the **NetServer File Share** screen change the **Access** parameter to **Read/Write** then press the **OK** button.

This should give you a new shared folder in your PC's Network.

Defining a Network Drive

If you placed **KMonitor** in a folder (like **KOverlay**) that your PC already has access to, you can skip this step. Otherwise, you will need to define a Network Drive letter (**K:**) that points to the **KMonitor** folder on your iSeries.

Mapping the K: drive:

1. Right click on **My Network Places** or **Network Neighborhood** on your PC, then select **Map Network Drive**.
2. Select the **K:** drive. Map this drive letter to your KMonitor folder on the IFS (`\\Qsxxxxxx\kmonitor`). You should be able to use the Browse button to find the **kmonitor on iSeries** folder that was defined using the Operations Navigator and select it.

Installing the Programs

After mapping the **K:** drive, as defined above, you can install the programs for **KeyesMonitor** in the **KMonitor** folder.

1. Double click **My Computer** on your PC.
2. Double click on the **kmonitor on 'iseries'** drive that was mapped to the **K:** drive in your Network Drives list.
3. Copy the file that was downloaded from our website into this folder.
4. Double click the self-expanding **.EXE** file to expand it.

Making a Shortcut to KeyesMonitor

After mapping the **K:** drive, as defined above, you can make a shortcut to **KeyesMonitor** and place this on your desktop.

Making a Shortcut:

1. Double click **My Computer** on your PC.
2. Double click on the **kmonitor on 'iseries'** drive that was mapped to the **K:** drive in your Network Drives list. A list of program objects should appear.
3. Grab the file called **KMonitor.bat** with your right mouse button. Drag this to your desktop and release it. Select **Create Shortcuts here**.

You can use the new shortcut to start **KeyesMonitor**.

Uninstalling KeyesMonitor

To remove **KeyesMonitor** simply delete the folder where the **KeyesMonitor** objects reside.

Using KeyesMonitor

KeyesMonitor, as shipped, will function just like a spool writer for PDF or TIF documents. The program will monitor a folder, looking for a specific filename extension. As each file appears in the folder, the program will launch a process to send the file to the designated printer. After the print has completed, **KeyesMonitor** will post process the file so that it will not be processed more than once. The file will be deleted, moved, or renamed, as directed.

Starting the KeyesMonitor Program

Locate the Shortcut to **KeyesMonitor** on your desktop and double click to start the program. This should run the KMONITOR.BAT file. The window for KMonitor.bat will stay on your screen, containing a log of all the program activity. You can use the log to see what files have been processed, or what errors might have occurred. The log can be minimized, if you prefer.

Starting & Stopping the Monitoring Process

After the **KeyesMonitor** program has been configured properly, you can press the **Run** button on the screen to start the monitoring process. The **Stop** button can be used to stop the monitoring process. This will work similar to starting and stopping a print writer for a printer's output queue.

Java Requirements

KeyesMonitor will require the Java Runtime Environment installed on your PC. You can see if Java is installed using *Control Panel/Add or Remove Programs*. If you wish to install or update Java, you should first remove any old version, then install new software from [<http://java.sun.com>].

Windows Requirements

In order to use KMPrint.bat as the “Application to run” within KeyesMonitor, Windows must be configured with a “printto” association for the file type that you are printing.

To check the association, do the following:

1. Using Windows Explorer select **Folder Options** from the **Tools** menu.
2. Click the **File Types** tab and find the **PDF** extension.
3. Highlight **PDF** and click the **Advanced** button.
4. Either use **New** or **Edit** to configure a **Printto** action. Example entries are shown below, for the full Acrobat and for the Acrobat Reader.

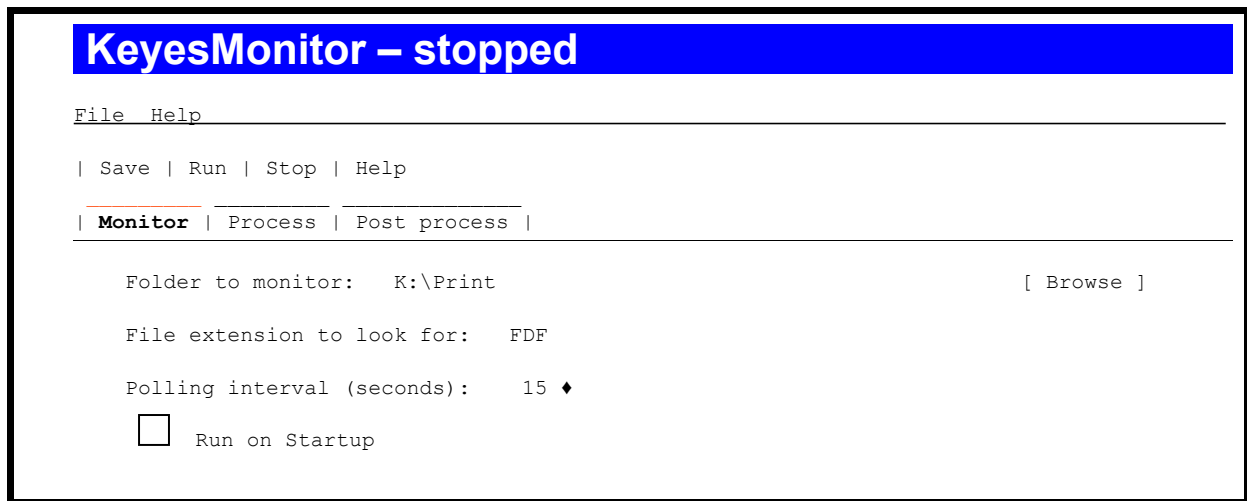
```
"C:\Program Files\Adobe\Acrobat 5.0\Acrobat\Acrobat.exe" /t "%1" "%2" "%3" "%4"
```

```
"C:\Program Files\Adobe\Acrobat 7.0\Reader\AcroRd32.exe" /t "%1" "%2" "%3" "%4"
```

Configuring KeyesMonitor

To configure **KeyesMonitor**, you will need to select each of the 3 tabs (Monitor, Process & Post process) and set the desired attributes of the program. The configuration will be stored in the **KeyesMonitor.Properties** file, when you press the **Save** button. This file will be created in the same folder where the rest of the programs are located. If you want to have two or more different configurations of **KeyesMonitor**, you will need to install them in different folders or drives.

Monitor Tab



Folder to monitor:

This field describes the folder that will be monitored by the program. You can use the **Browse** button to find and select a folder.

File extension to look for:

Type the filename extension that you want the program to watch for. When a file with this extension appears in the folder, it will be processed. Either PDF or FDF extensions can be used for printing PDF documents. This can make it very convenient for leaving a copy of the PDF in the folder for further access. For example, you can monitor for FDF files and rename them to PDF after printing.

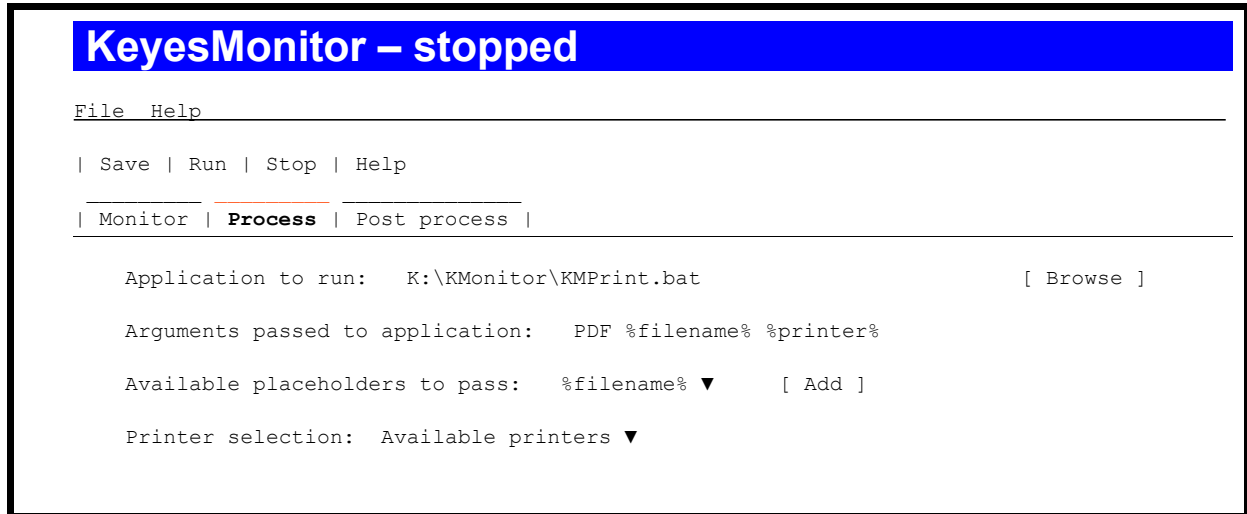
Polling interval (seconds):

Select the number of seconds that the program will wait after processing the previously found files. If this value is left blank, 10 seconds will be used.

Run on Startup

Select this item to automatically start the monitoring process running, when the program first begins.

Process Tab



Application to run:

This points to the name of the program that you want to use to process the files that are being monitored. KMPrint.bat is supplied by us to print PDF, FDF, or TIF files.

Arguments passed to application:

The KMPrint.bat file will accept three parameters: The first is the file type that you are printing (PDF or TIF). The second parameter is the filename being processed (%filename% is a placeholder that will pass the current filename). The third is the printer that you want the file to be printed on (%printer% is a placeholder that will pass the selected printer).

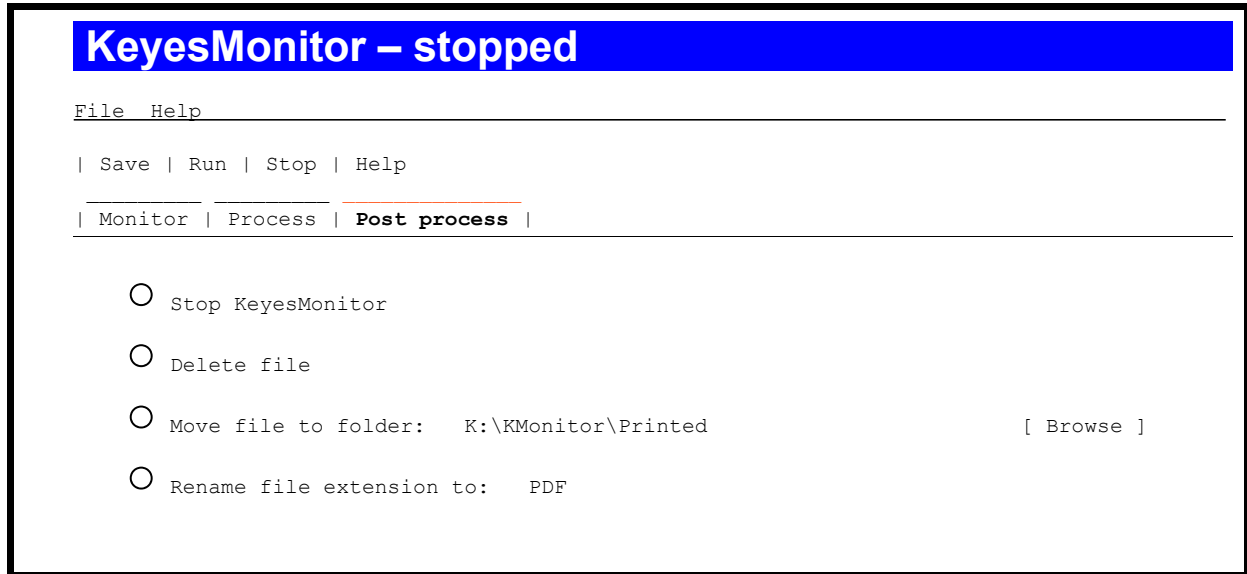
Available placeholders to pass:

This field contains the different placeholders (parameters) that KeyesMonitor can pass as arguments to the application program.

Printer selection:

This should list all of the printers that you have available to the application. You should select the desired printer before starting the process.

Post Process Tab



Select one of the available Radio buttons, for post processing.

Stop KeyesMonitor

This option will stop the KeyesMonitor program from monitoring for any more files, after processing one file. This option can be useful for testing.

Delete file

The processed files will be deleted, from the monitored folder.

Move file to folder:

The processed files will be moved from the monitored folder to the folder named in the following parameter. You can use the **Browse** button to help you locate the desired folder.

Rename file extension to:

The processed files will have their filename extension changed to the extension that you name in the following parameter.

Index

A

| | |
|---------------------------------|----|
| Application to run | 11 |
| Arguments passed to application | 11 |

C

| | |
|--------------------------|----|
| Configuring KeyesMonitor | 10 |
|--------------------------|----|

F

| | |
|----------------------------|------|
| File extension to look for | 10 |
| File Share | 6 |
| Folder to monitor | 10 |
| Folders | |
| KMONITOR | 6, 7 |
| KOVERLAY | 6, 7 |

I

| | |
|---------------------------|---|
| Installation Instructions | 6 |
|---------------------------|---|

J

| | |
|--------------------------|---|
| Java Runtime Environment | 9 |
|--------------------------|---|

K

| | |
|------------------------------|----|
| KeyesMonitor.Properties file | 10 |
| KMonitor.bat (log) | 9 |

M

| | |
|--|----|
| Mapping the K: drive | 7 |
| Monitor Tab | 10 |
| Monitoring Process (Starting & Stopping) | 9 |

N

| | |
|---------------------------------|---|
| NetServer | 6 |
| NetServer File Share | 7 |
| NetServer File Share (defining) | 7 |
| Network Drive | 6 |
| Network Drive (defining) | 7 |

O

| | |
|----------------------|------|
| Operations Navigator | 6, 7 |
|----------------------|------|

P

| | |
|--------------------------|-------|
| PDF printing tool | 5 |
| Permissions | 7 |
| placeholders to pass | 11 |
| Polling interval | 10 |
| Post Process Tab | 12 |
| Post processing the file | 5 |
| Printer selection | 11 |
| Printto action | 9 |
| Process Tab | 11 |
| Processing the file | 5 |
| Programs | |
| KeyesFax | 5 |
| KeyesMail | 5 |
| KeyesMonitor | 5, 9 |
| KeyesPDF | 5 |
| KMonitor.bat | 8 |
| KMPrint.bat | 9, 11 |
| PDF or TIF print writer | 5 |
| Properties file | 10 |

S

| | |
|--|---|
| Shortcut to KeyesMonitor | 8 |
| spool writer for PDF documents | 5 |
| Starting & Stopping the Monitoring Process | 9 |

U

| | |
|---------------------------|---|
| Uninstalling KeyesMonitor | 8 |
|---------------------------|---|